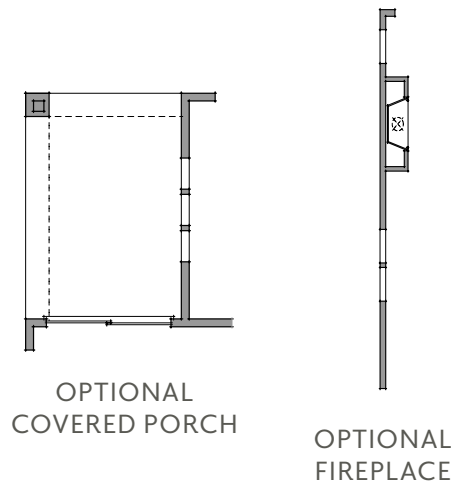




PORTELLO



FLOOR PLAN 2

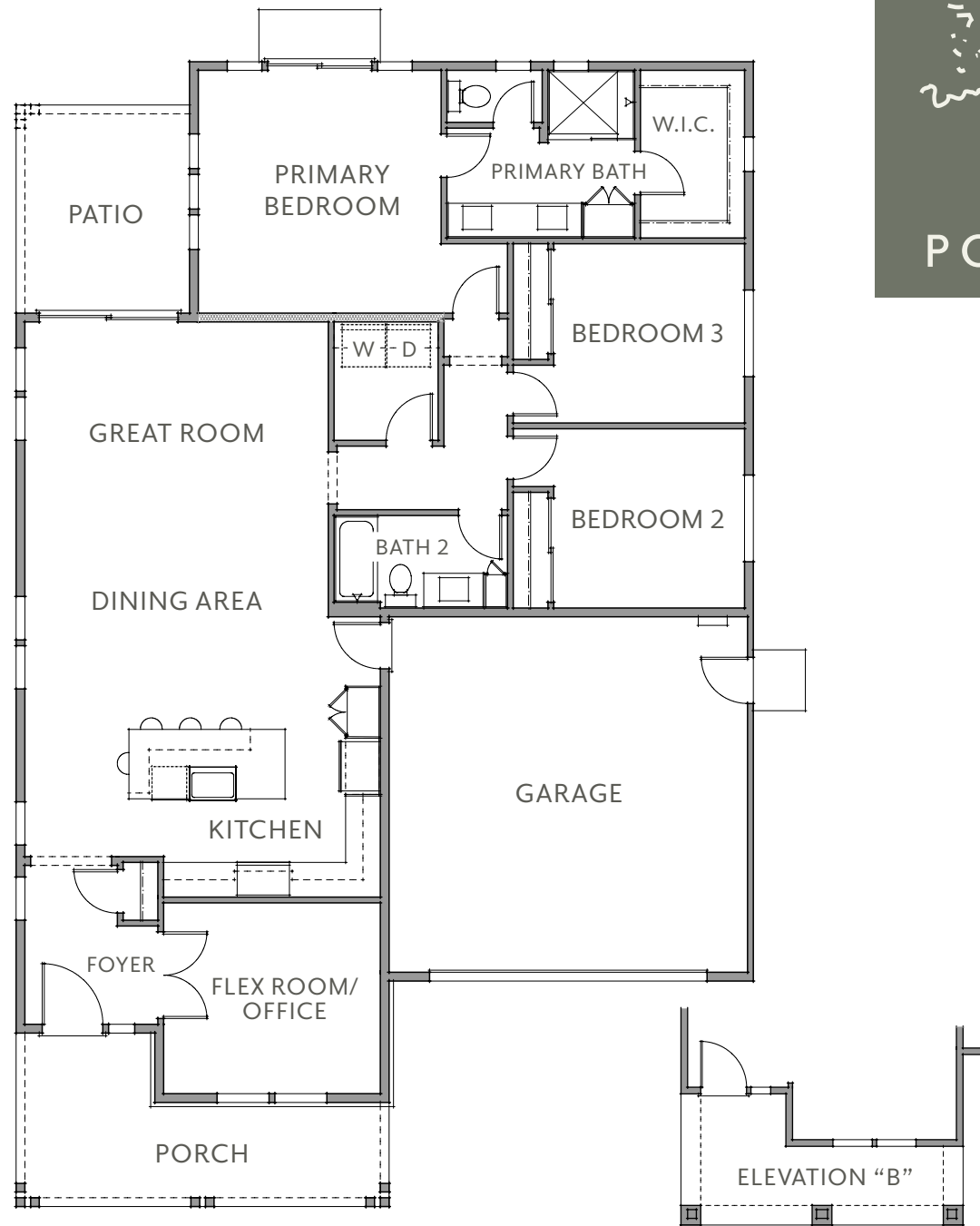
3 BEDROOMS + OFFICE


2 BATHROOMS

1785 SQFT

SINGLE LEVEL

2 CAR GARAGE



House square footage and lot size is approximate. In an effort to continuously improve our homes, the builder reserves the right to change floor plans, specifications and prices without notice. Special wall and window treatments, upgraded floor coverings, landscaping, custom design walk and patio treatments and many other items featured in and around the model homes are decorator suggested and not included in the purchase price. Maps, photographs, renderings, and landscaping are illustrative and conceptual. Please see sales agent should you have any questions. All Real Estate Brokers must register their clients on the first visit. DRE#01795950 | Updated 7/5/22 

W
MARKETING